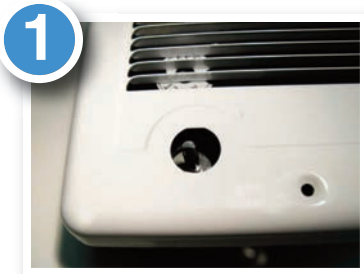




Replace a Broken Knob

ON A COM-PAK C, CS, CST, CT, AND CM

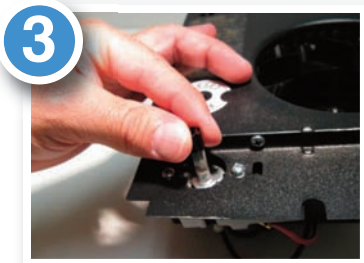


1 Look in thermostat cutout.

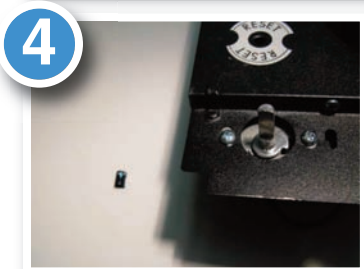


2 Remove the “D”-shaped inner clip (known as a Tinnerman Clip).

Note – Removal of grill is not required for this project and only shown to emphasize Tinnerman Clip removal.



3 Using needle-nose pliers (or fingers if accessible) pull clip off thermostat stem.



4 Throw away old clip.



5 Replace with new knob making sure to align D Clip with thermostat stem. No hammering is needed, only gentle pressure.